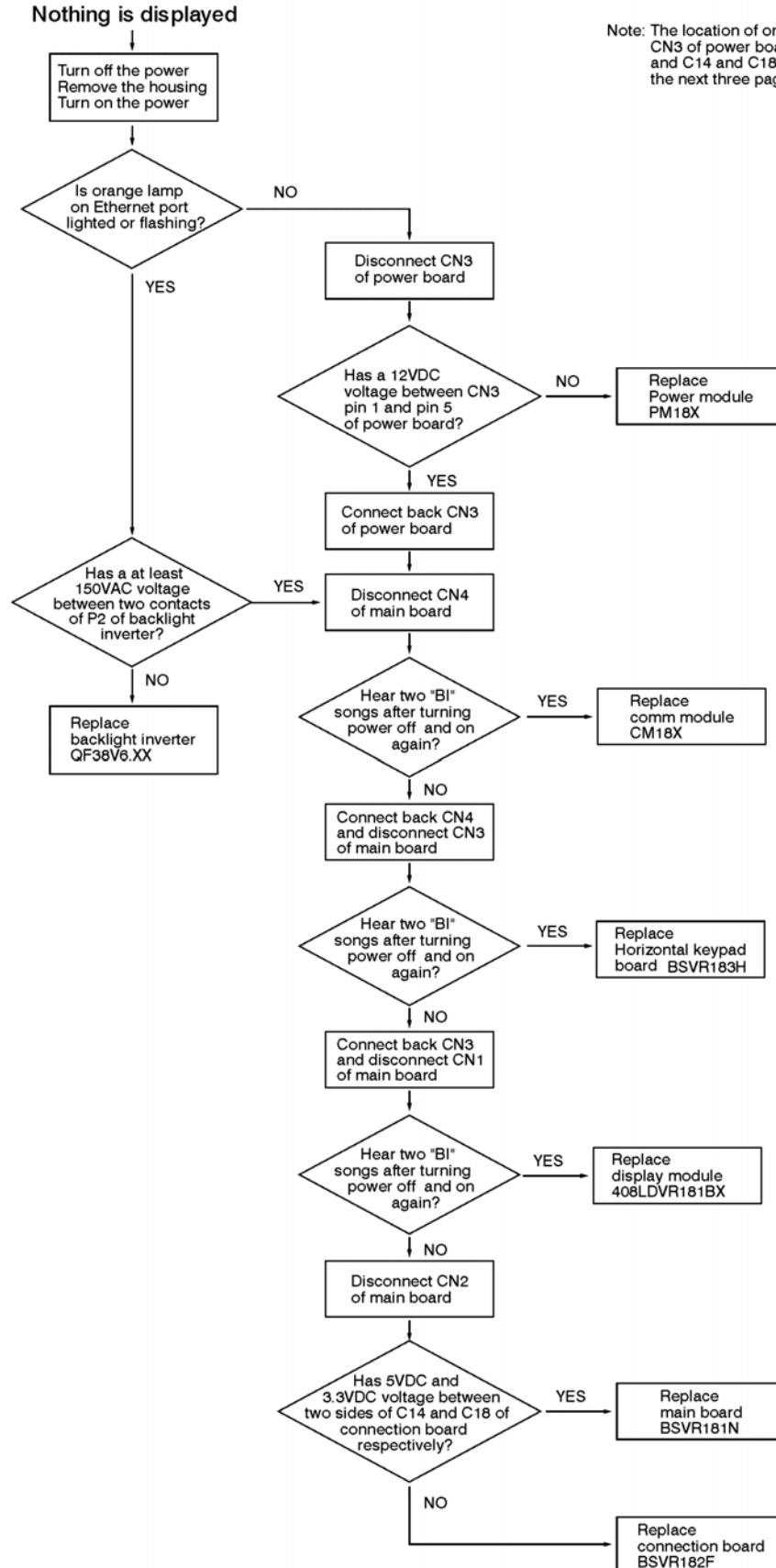
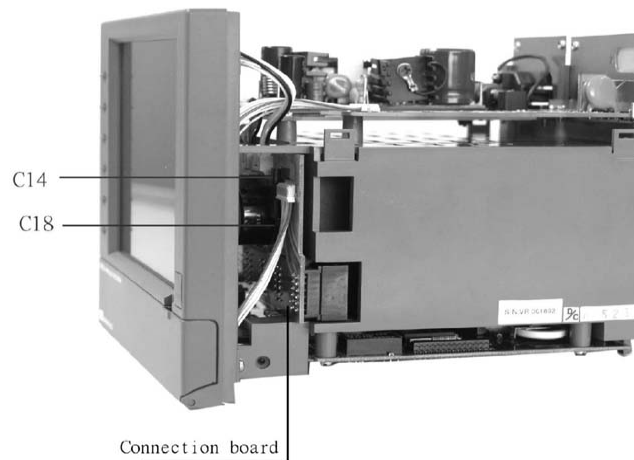
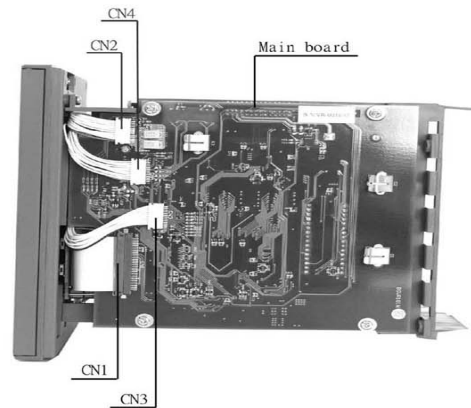
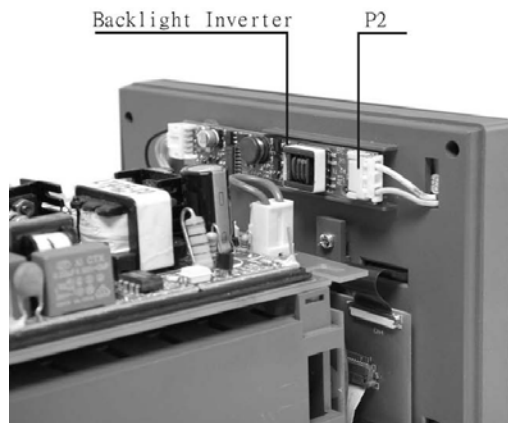
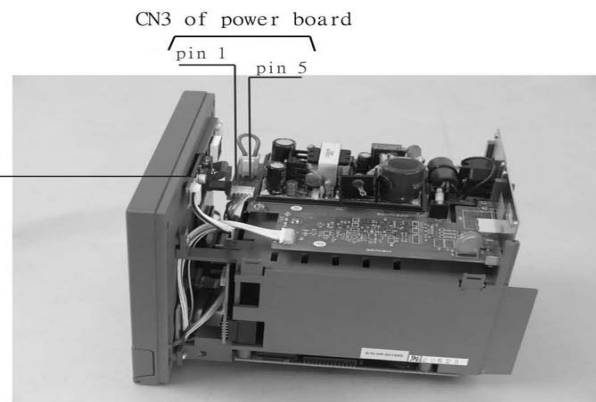
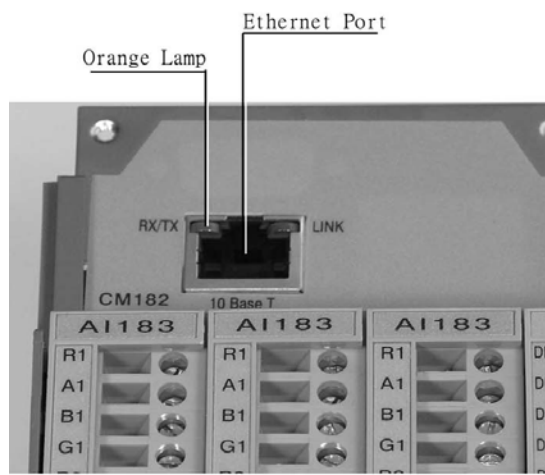


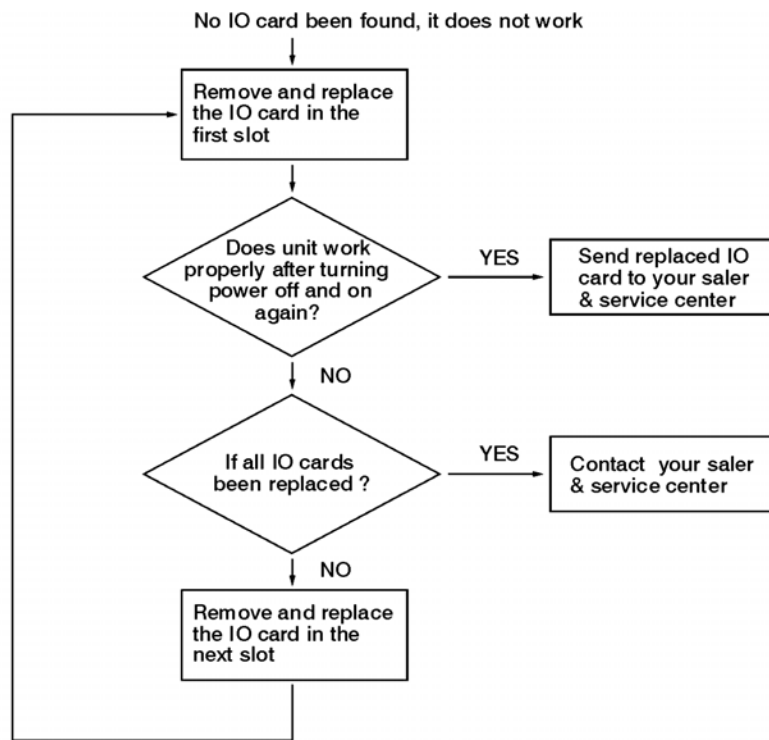
Trouble-shooting Flow Chart

Rev. A



Note: The location of orange lamp, P2 of backlight inverter, CN3 of power board, CN1 through CN4 of main board and C14 and C18 of connection board are indicated on the next three pages.





Note: (1) At least one of analog input card AI183X have to be installed if the unit is with core system firmware version V1.31 or earlier version.

(2) At least one of analog input card AI183X, digital input card DI181, digital output card DO181 or analog output card AO181 needs to be installd if the unit is with core system fireware version V2.0 or later version.

Future Design Controls, Inc.

7524 West 98th Place, P.O. Box 1196, Bridgeview, IL 60455 USA

888.751.5444 - Office:

888.307.8014 - Fax

866.342.5332 - Technical Support

E-mail: csr@futuredesigncontrols.com

Website: <http://www.futuredesigncontrols.com>